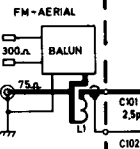


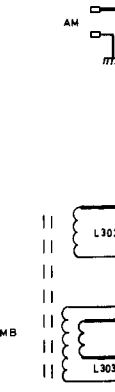
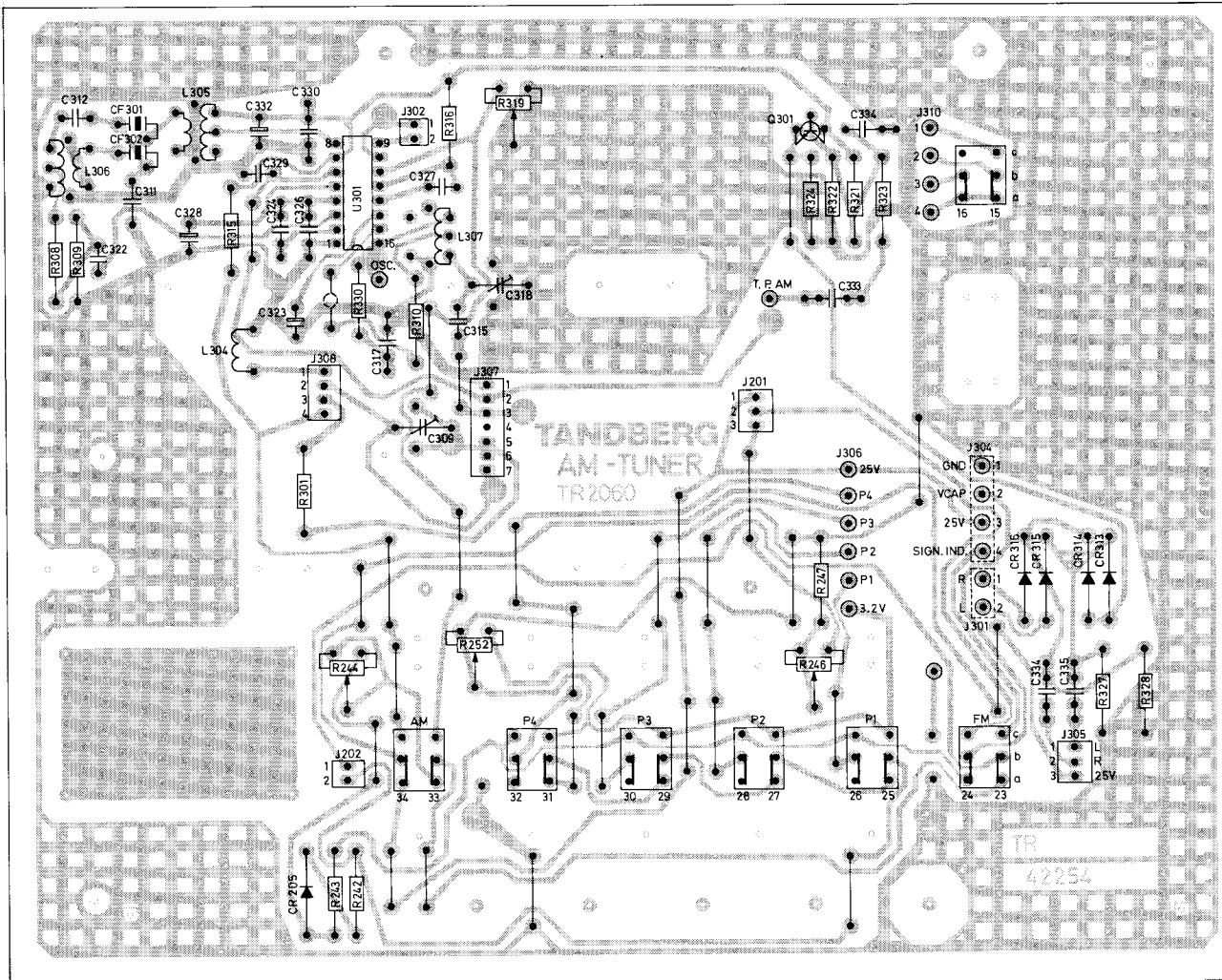
TANDBERG

TR2060

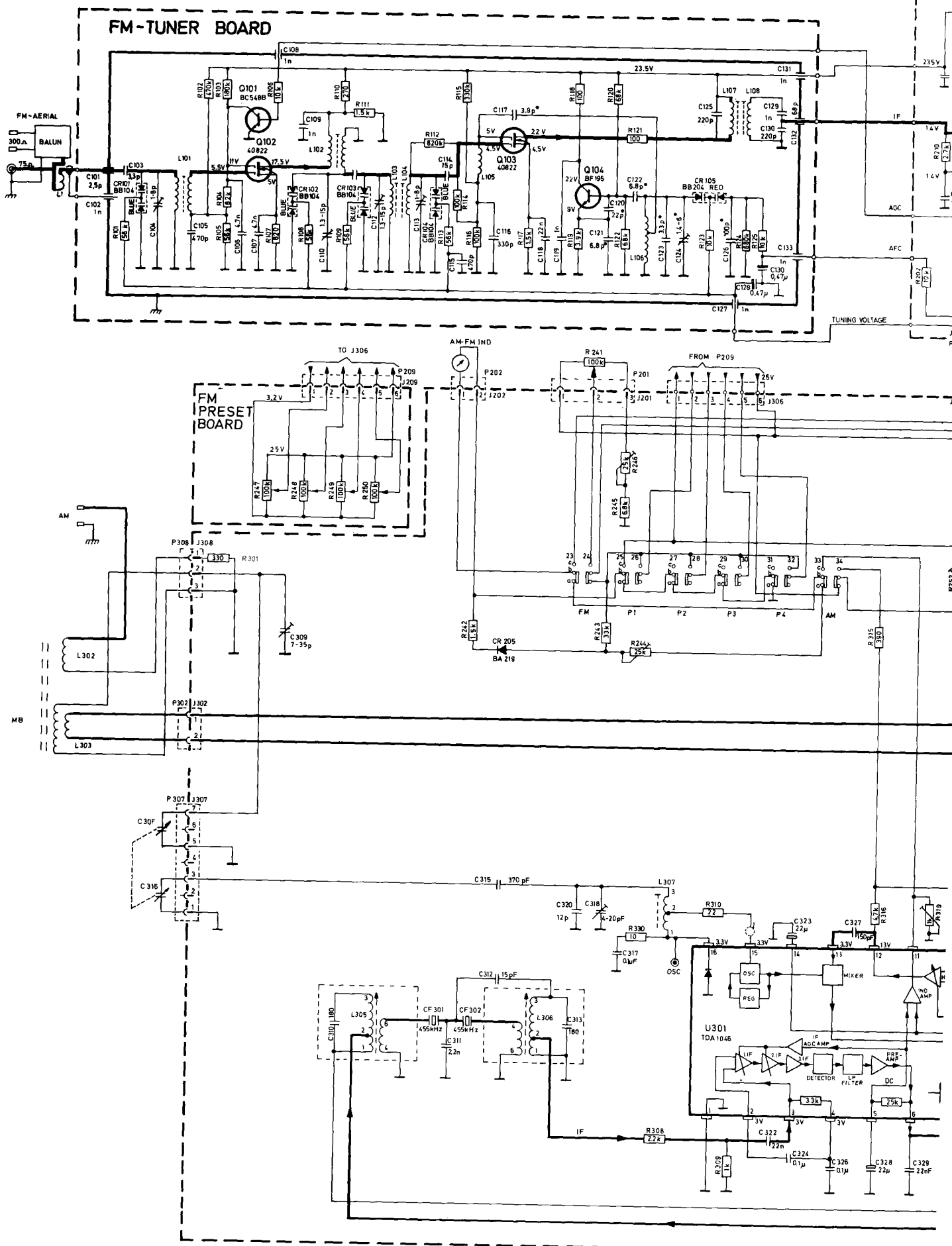
Circuit diagrams

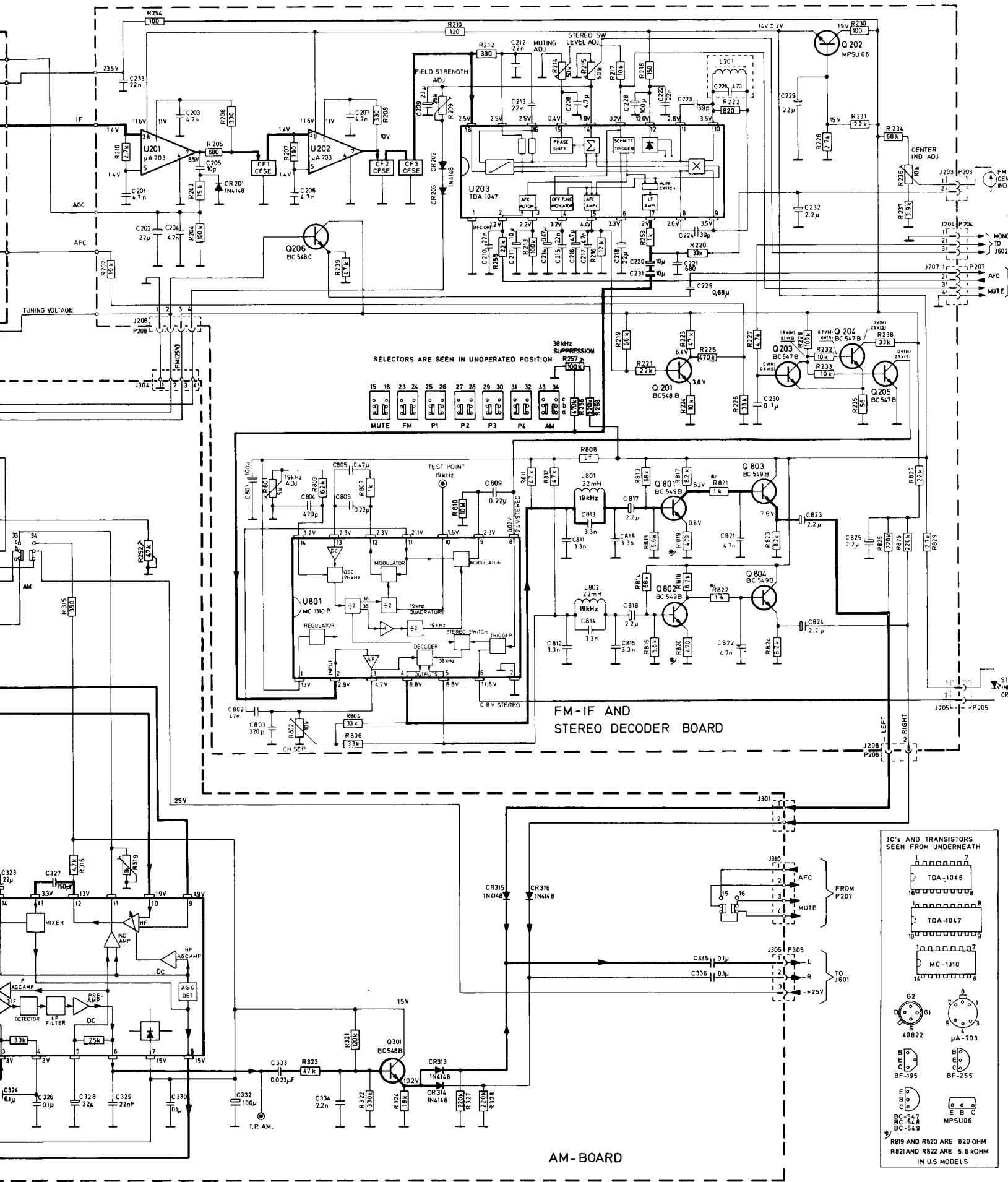


AM-TUNER



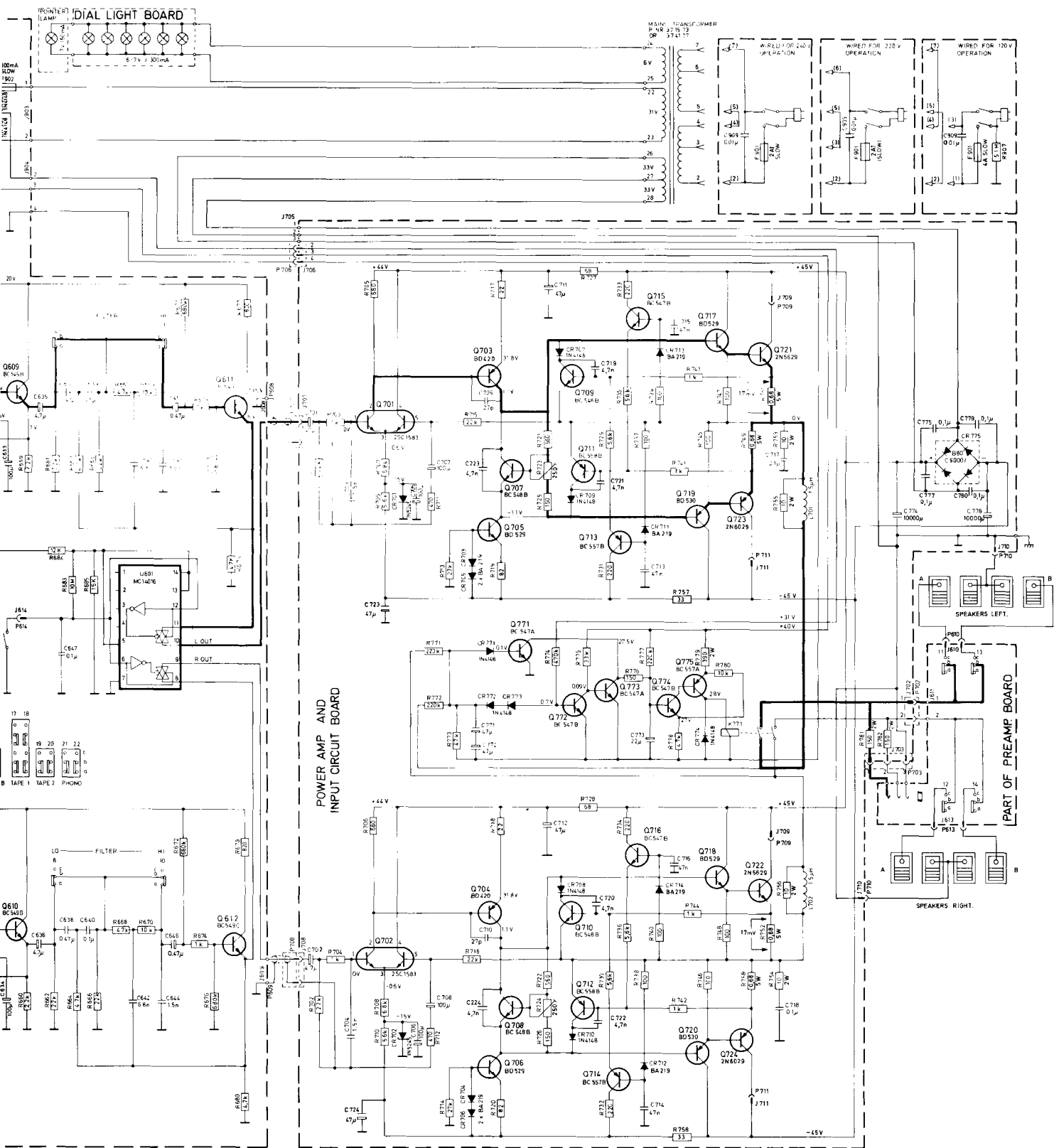
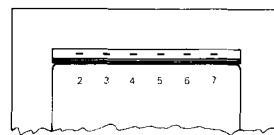
Seen from the solder side



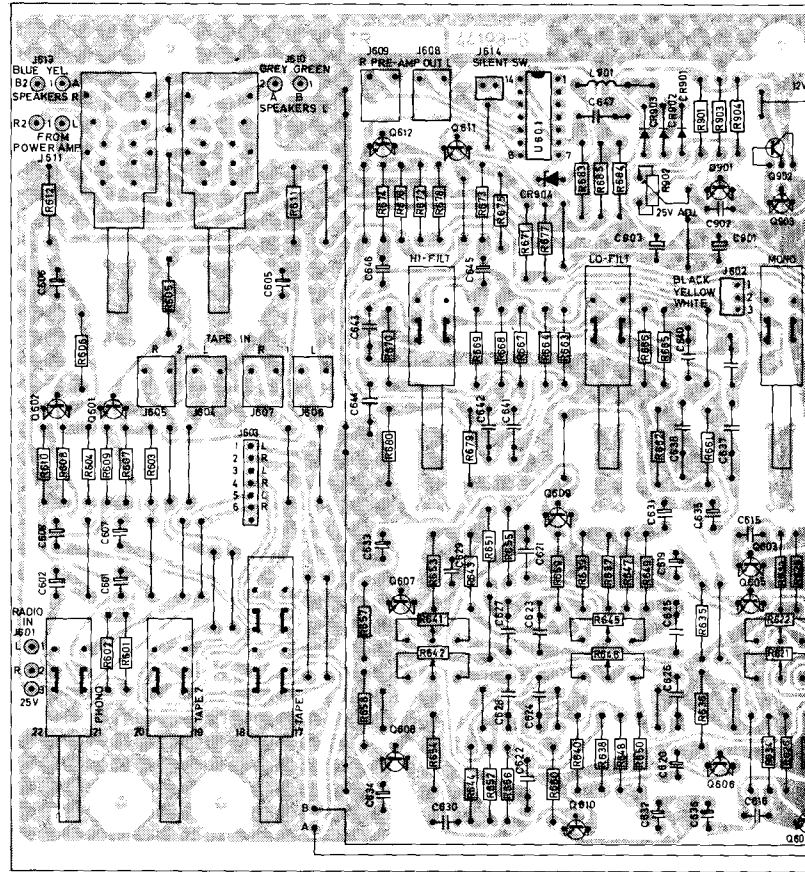


AM-BOARD

- IC'S AND TRANSISTORS SEEN FROM UNDERNEATH
- TDA-1046
 - TDA-1047
 - MC-1310
 - Q2
 - Q1
 - Q3
 - Q4
 - Q5
 - Q6
 - Q7
 - Q8
 - Q9
 - Q10
 - Q11
 - Q12
 - Q13
 - Q14
 - Q15
 - Q16
 - Q17
 - Q18
 - Q19
 - Q20
 - Q21
 - Q22
 - Q23
 - Q24
 - Q25
 - Q26
 - Q27
 - Q28
 - Q29
 - Q30
 - Q31
 - Q32
 - Q33
 - Q34
 - Q35
 - Q36
 - Q37
 - Q38
 - Q39
 - Q40
 - Q41
 - Q42
 - Q43
 - Q44
 - Q45
 - Q46
 - Q47
 - Q48
 - Q49
 - Q50
 - Q51
 - Q52
 - Q53
 - Q54
 - Q55
 - Q56
 - Q57
 - Q58
 - Q59
 - Q60
 - Q61
 - Q62
 - Q63
 - Q64
 - Q65
 - Q66
 - Q67
 - Q68
 - Q69
 - Q70
 - Q71
 - Q72
 - Q73
 - Q74
 - Q75
 - Q76
 - Q77
 - Q78
 - Q79
 - Q80
 - Q81
 - Q82
 - Q83
 - Q84
 - Q85
 - Q86
 - Q87
 - Q88
 - Q89
 - Q90
 - Q91
 - Q92
 - Q93
 - Q94
 - Q95
 - Q96
 - Q97
 - Q98
 - Q99
 - Q100
- R819 AND R820 ARE 820 OHM
R821 AND R822 ARE 5.6 KOHM
IN U.S. MODELS

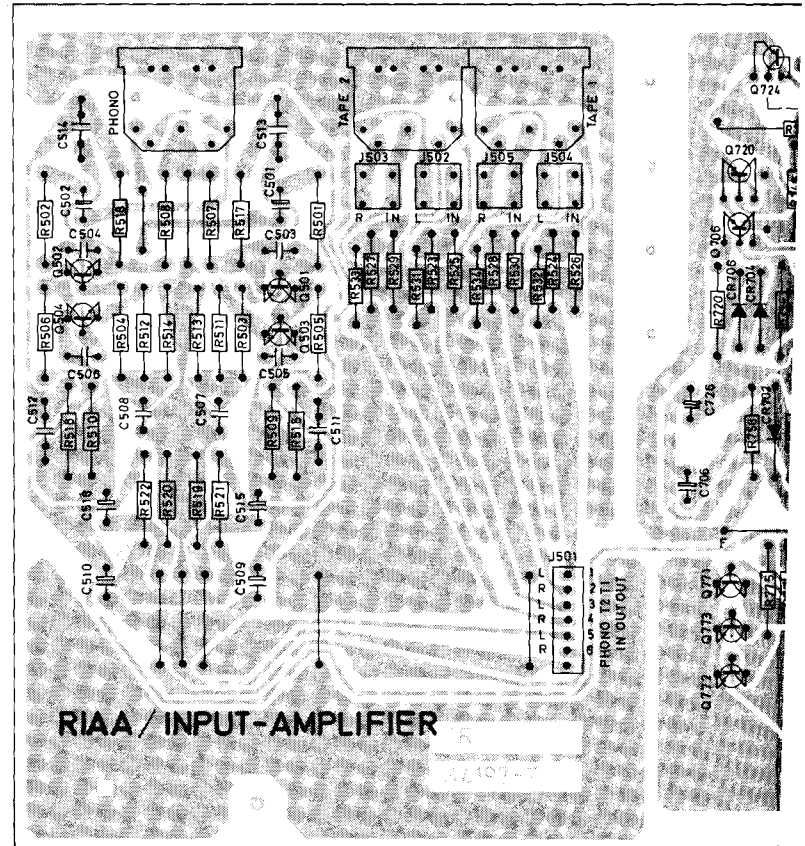


PRE-AMPLIFIER

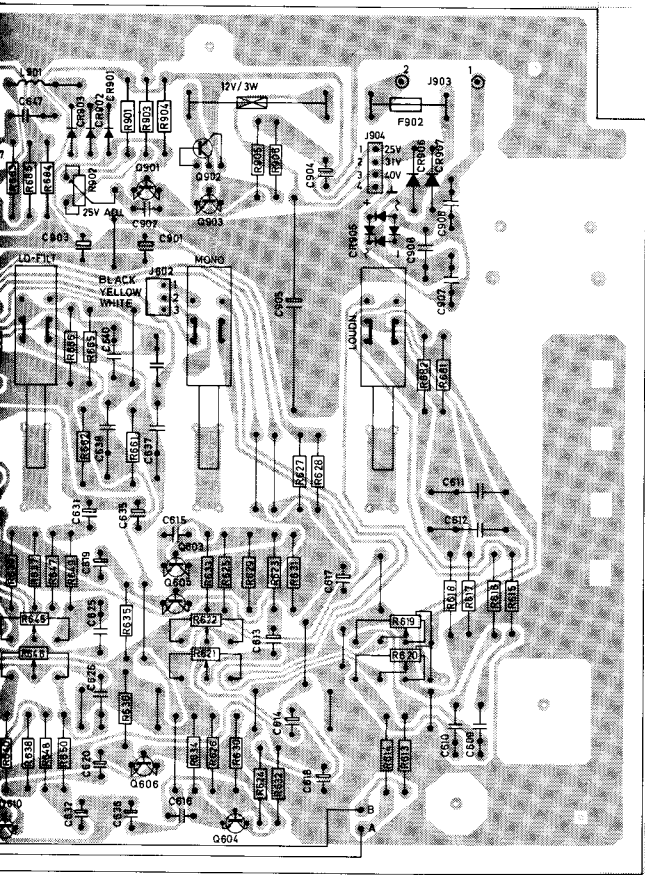


Seen from the solder side

RIAA/INPUT-AMPLIFIER, POWER-AMPLIFIER



Seen from the solder side



FIER

