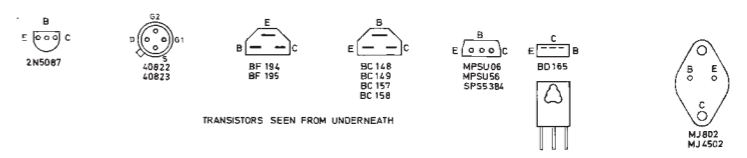
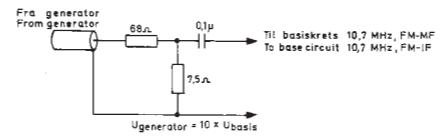


Index	Målebetingelser – Conditions for measurements
1.	$f = 90 \text{ MHz}$, dev. = 22,5 kHz, Gen.imp. = 75 Ω . 3 dB begrensnig (limiting).
2.	$f = 10,7 \text{ MHz}$, dev. = 22,5 kHz, $U_{\text{signal}} = U_{\text{gen}}$ tilført (applied) via probe, see fig.
3.	Spennig på uttak TAPE (M6), belastet med 47 k Ω , ved angitte MF-spenninger. Voltage at TAPE output (M6), loaded with 47 k Ω , for the specified IF-signal voltages.
4.	Spennig målt ved signal $U = 1 \text{ mV}/75\Omega$, $f = 90 \text{ MHz}$, dev. = 22,5 kHz tilført M1. Measured at signal $U = 1 \text{ mV}/75\Omega$, $f = 90 \text{ MHz}$, dev. = 22,5 kHz applied M1.
5.	$f = 1400 \text{ kHz}$, 30% mod., via dummy ant. fig. 16.
6.	$f = 455 \text{ kHz}$ via 0,1 μF .
7.	$f = 455 \text{ kHz}$ via 0,1 μF , stoppet oscillator, (dead oscillator).
8.	$f = 1000 \text{ Hz}$, volum - bass - diskant i stilling max. Merk: Følsomhet avhengig av INPUT SENSITIVITY
9.	$f = 1000 \text{ Hz}$, volume - bass - treble in max. position. Note: Sensitivity depends on setting of INPUT SENSITIVITY
10.	$f = 1000 \text{ Hz}$
11.	Belastet med 4 ohm (Loaded with 4 ohms).



Merk! HF-målinger refererer til spenningen på TAPE-utgang (M6).
 LF-målinger refererer til spenningen på høyttalerutgang (M25).
 Note! RF-measurements are referred to the voltage at TAPE output (M6).
 AF-measurements are referred to the voltage at SPEAKER output (M25).

Fig. 18. Skjema, LF-delen.
 Circuit diagram, AF-section.

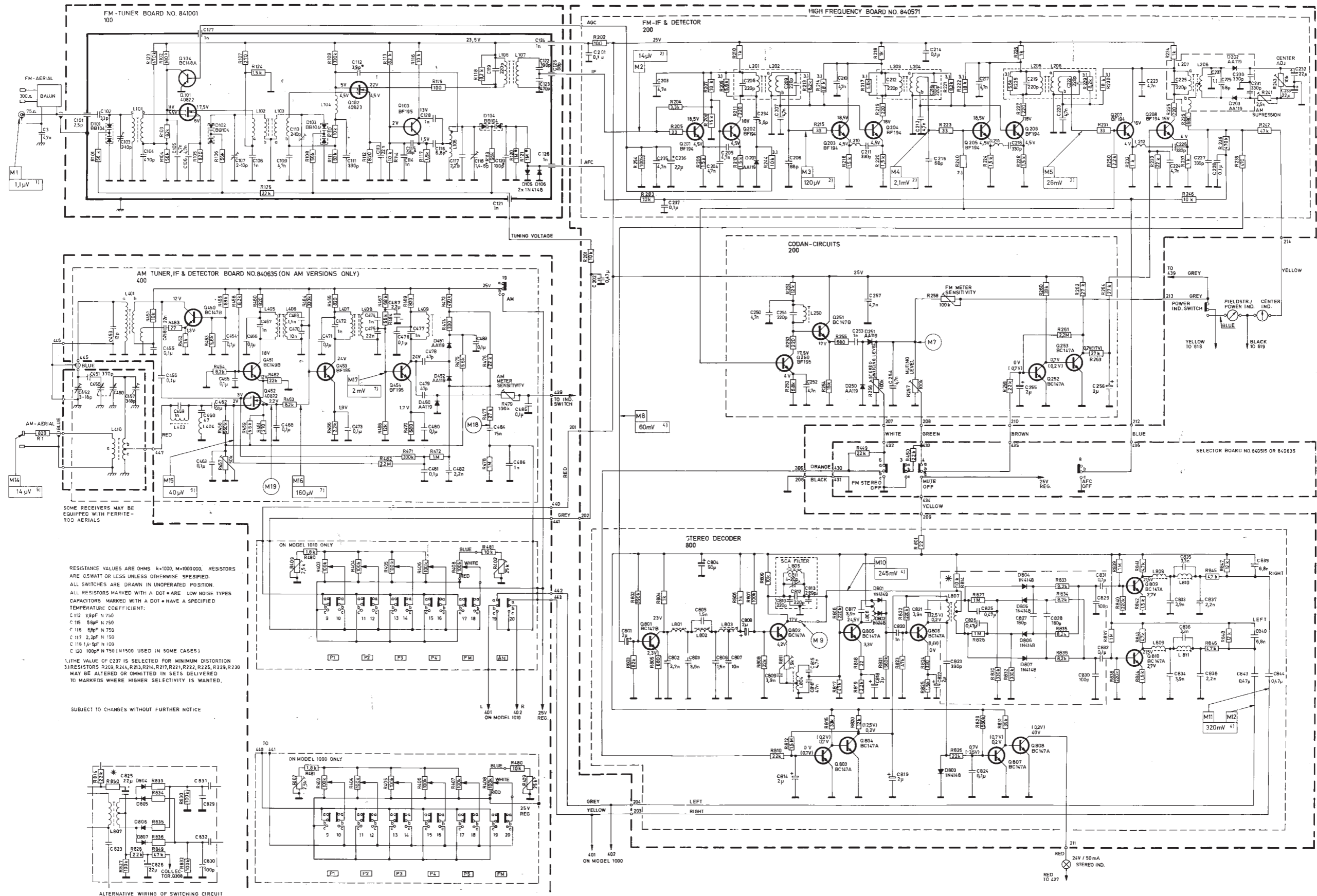


Fig. 28. Skjema, radiodel.
Circuit diagram, tuner section.

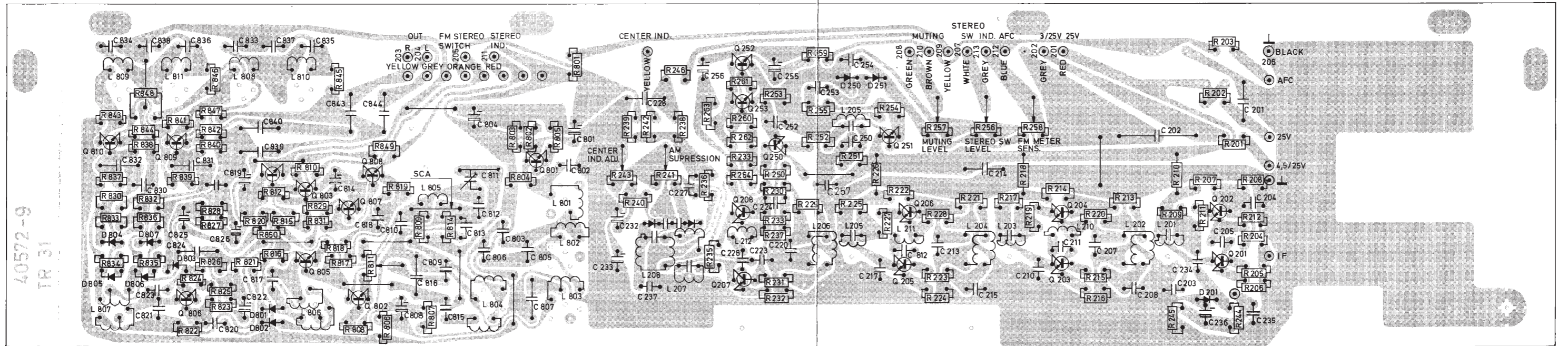


Fig. 20. FM - MF plate.
FM - IF board.

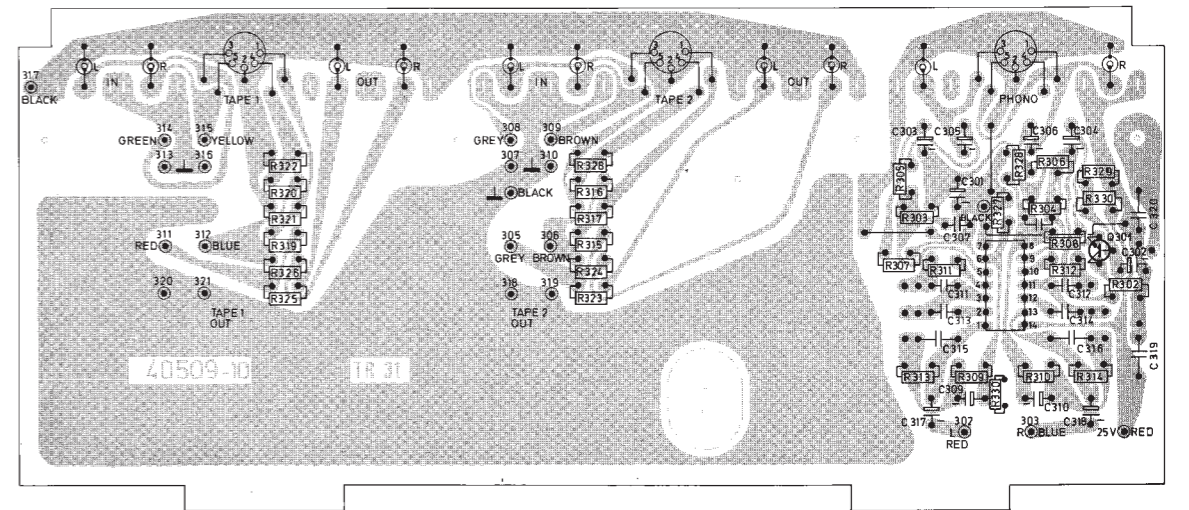


Fig. 24. Inngangsplate.
Input board.

Ekstra forsterkertrinn med Q507 og Q508 innført fra serienr. 1400860.

The amplifier stage Q507/Q508 is introduced above serial no. 1400860.

Komponentene innenfor den stiplede rammen representerer mikrofonforsterkeren, se side 18.

The components inside the dotted frame represents the microphone amplifier, see page 18.

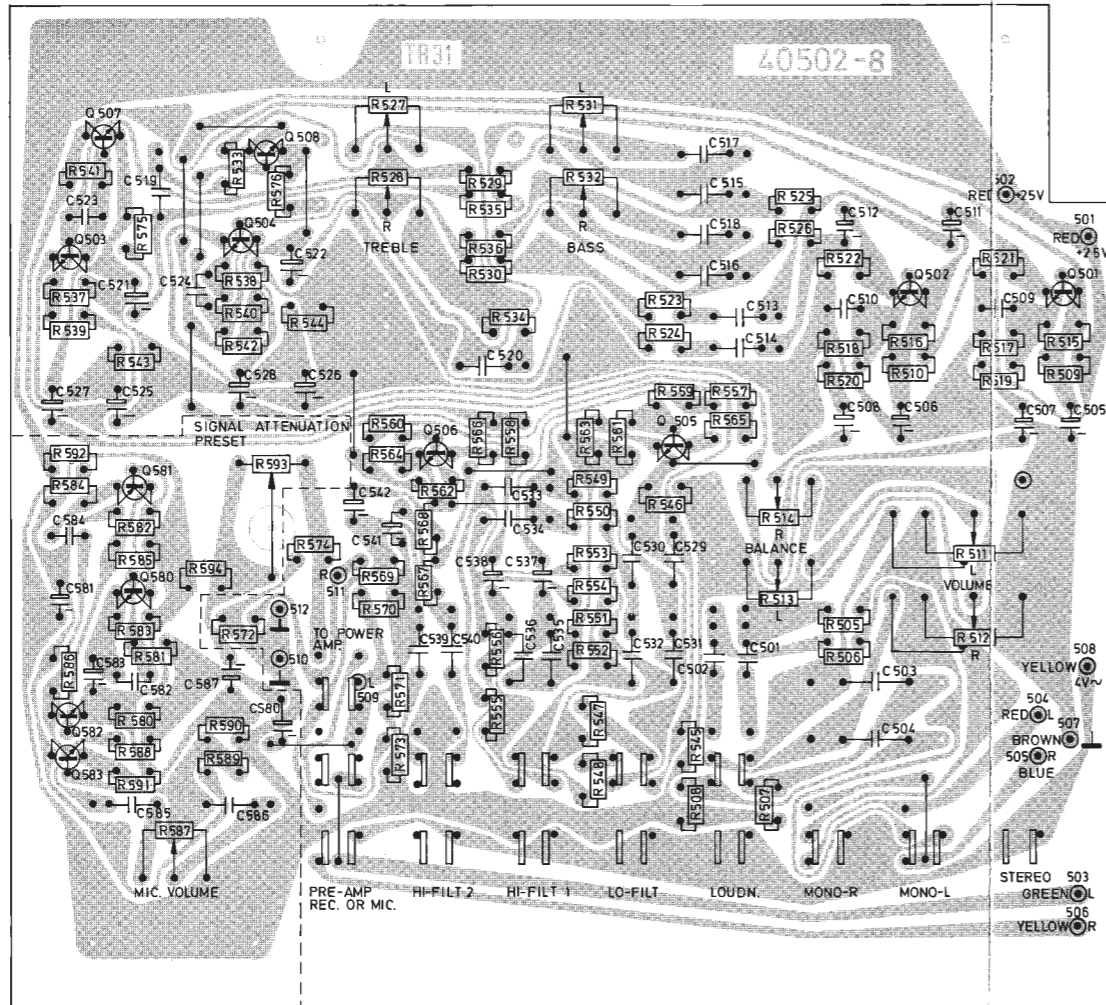


Fig. 23. Forforsterkerplate.
Preamplifier board.

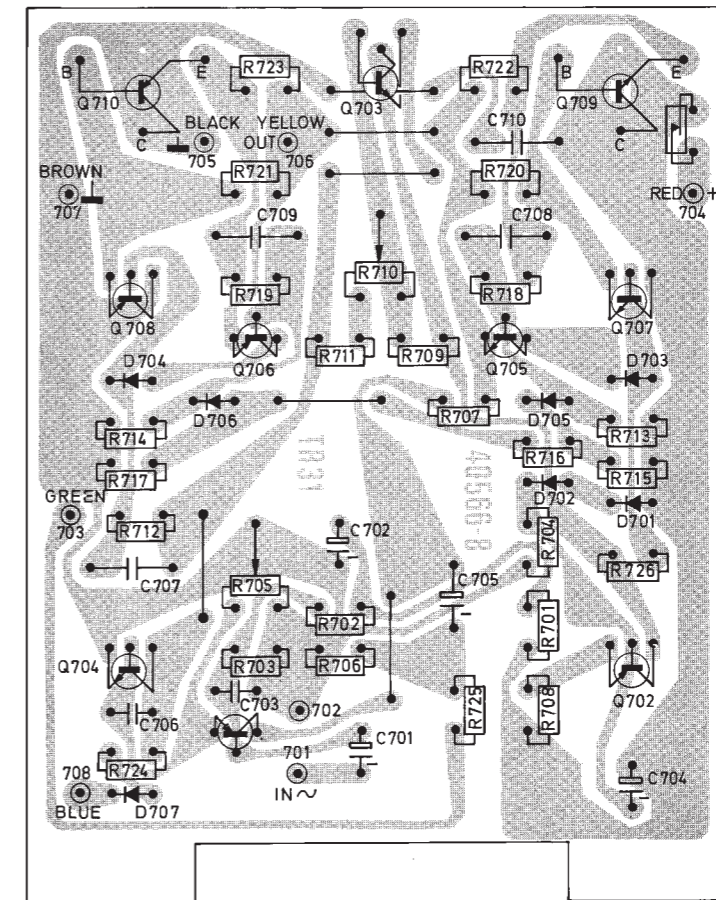


Fig. 21. Sluttforsterkerplate.
Power amplifier board.

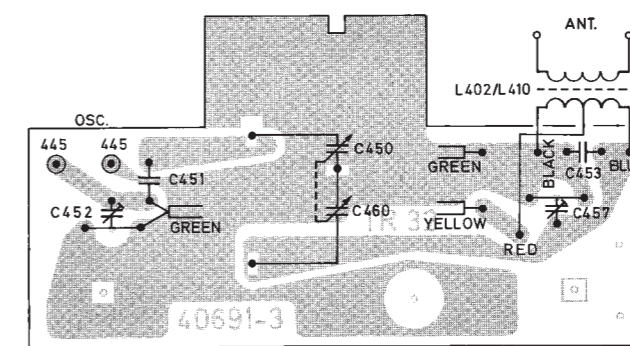


Fig. 22. AM-forkretsplate (TR-1010).
AM-antenna circuit board (TR-1010).