

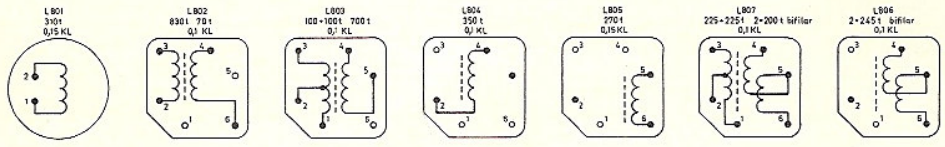
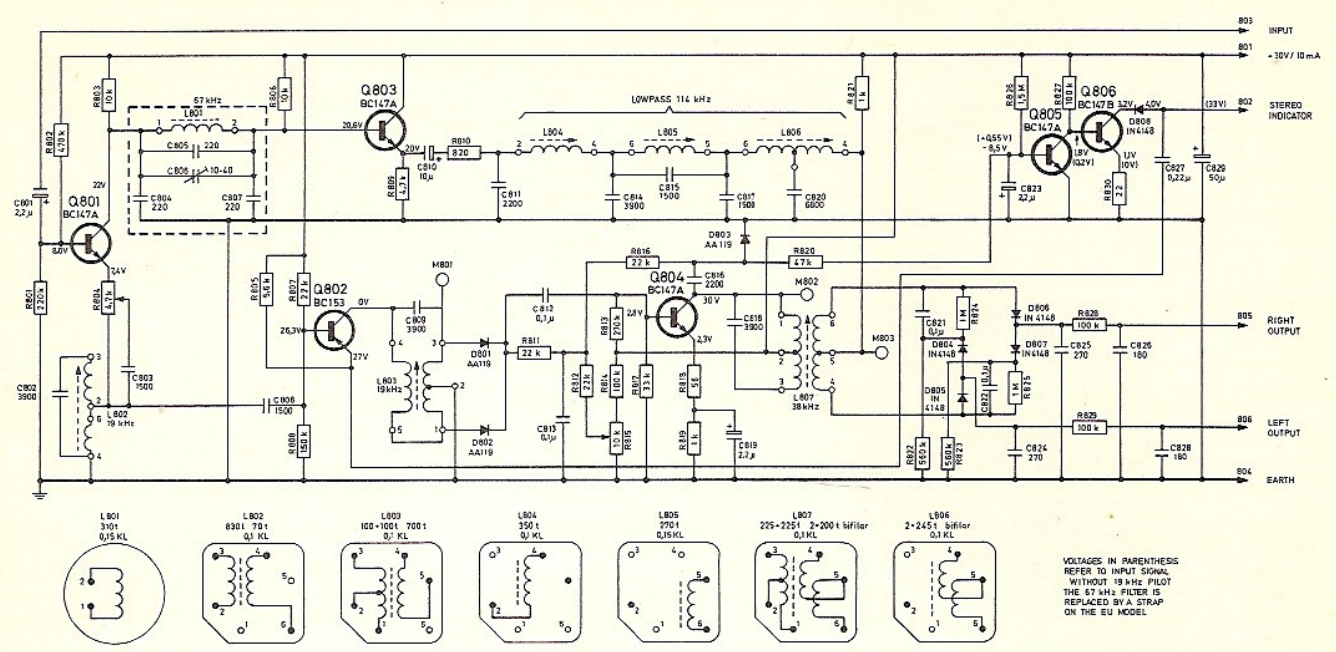
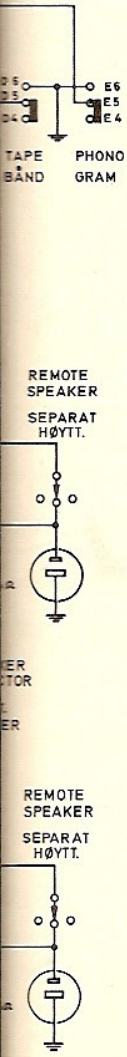
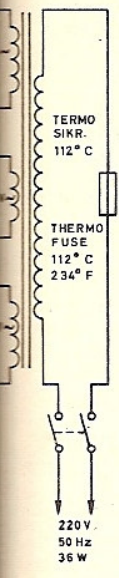
* MEASURED WITH VTVM, 2MΩ PROBE
MALT MED RØRVLTMETER, OG 2 MΩ PROBE

FIGURES GIVEN IN PARENTHESES REFER TO FM-OPERATION
SPENNINGENE I PARANES GJELDER FM-STILLING

RETTELSE:
Dette skjema gjelder fra serienr. 1051501

TANDBERGS RADIOFABRIKK A/S
WIRING DIAGRAM SS 10
DRAWING NO. 10700-1
FROM SERIAL NO. 21500

AUG. 1959



THE COILS ARE SEEN FROM THE PRINTED SIDE

Wiring diagram.
 Stereo Decoder mod. 4 EU.

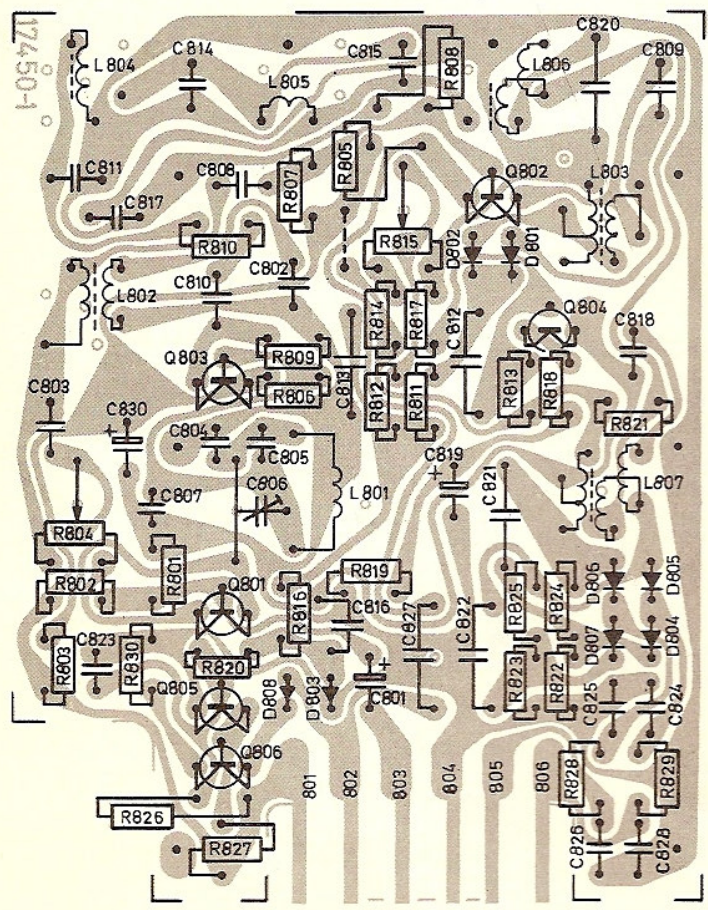
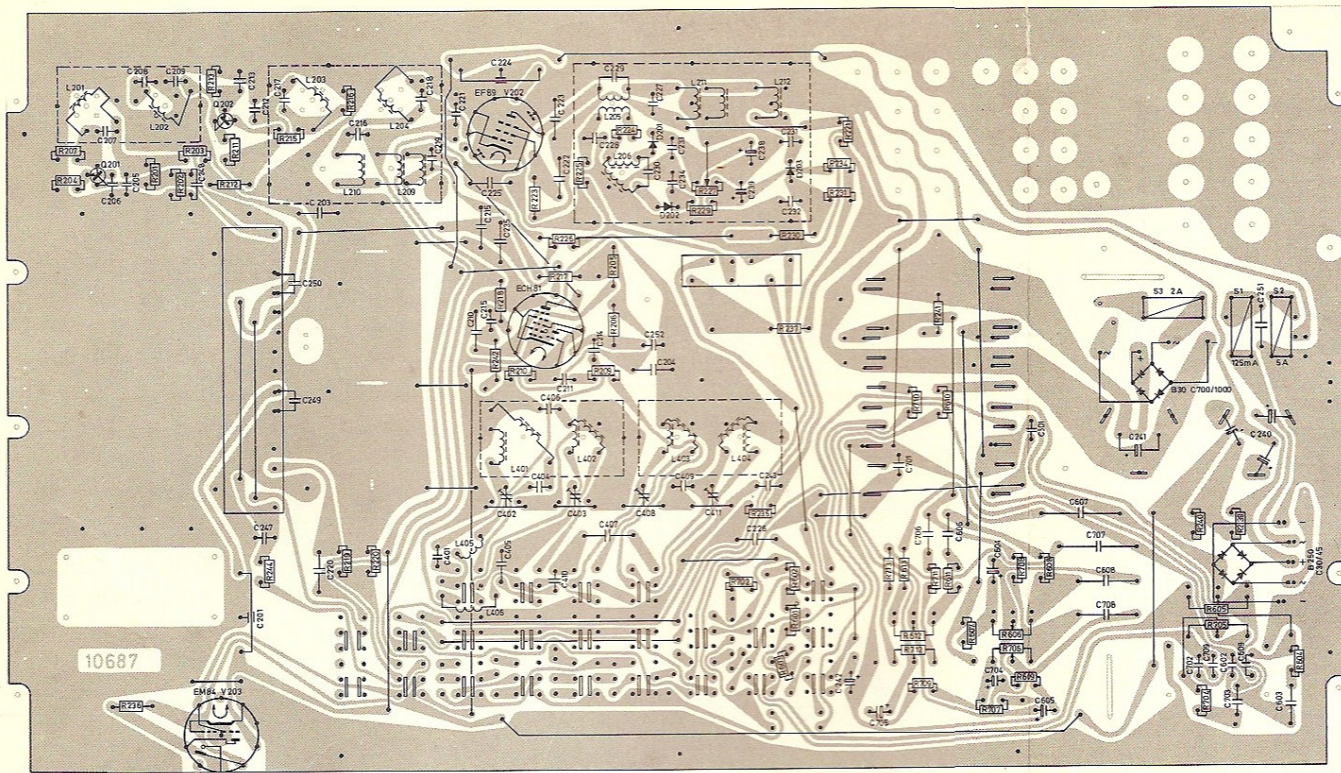


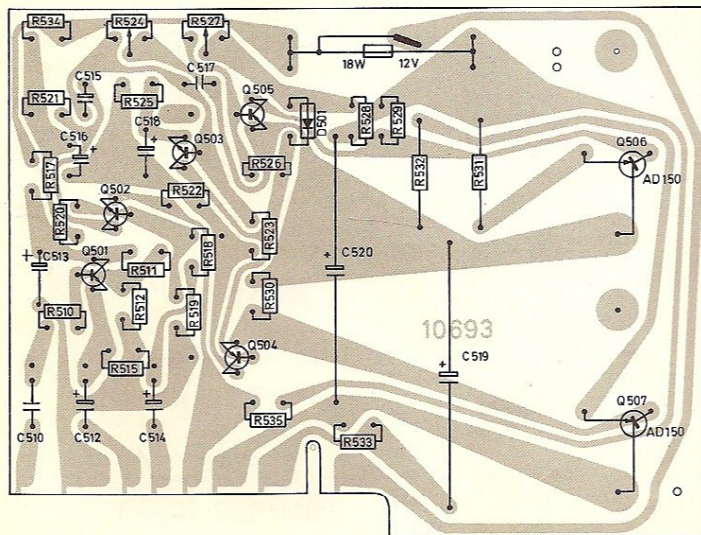
Plate stereo decoder mod. 4 EU,
 sett fra foliesiden.
 The stereo decoder board mod. 4 EU,
 seen from the printed side.

RETTELSE:
 Dette skjema gjelder
 fra serienr. 1051501

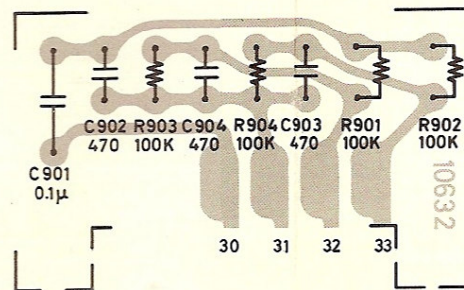
TANBERGS RADIOFABRIKK A/S
SØLVSUPER 10 STEREO
 From serial no. 21500
 Fra serie nr. 21500



Hovedplaten sett fra foliesiden.
The main circuit board seen from the printed side.

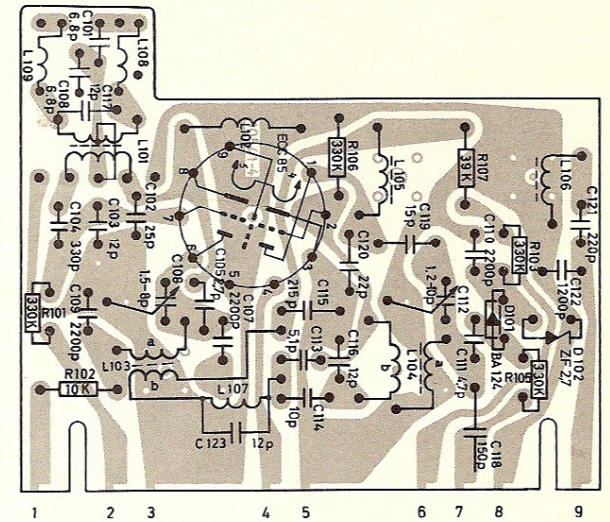


LF-platen sett fra foliesiden.
The power amplifier board seen from the printed side.

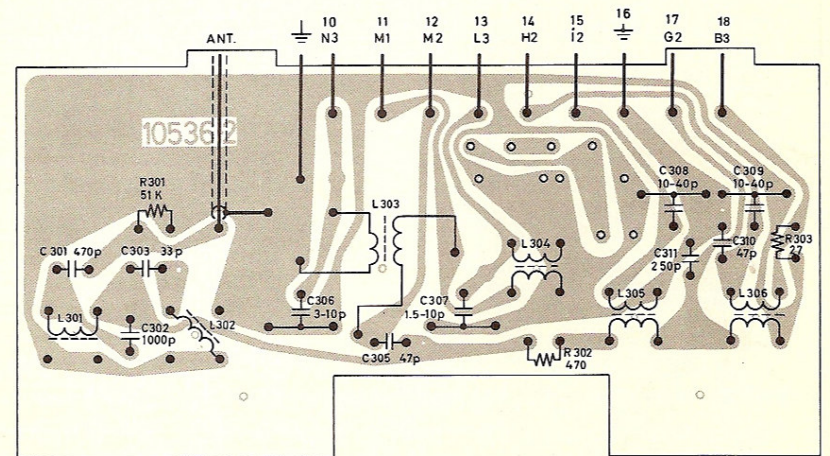


Kontaktplate for stereodecoder, sett fra foliesiden.
Denne platen fjernes ved innplugging av stereodecoder modell 3.

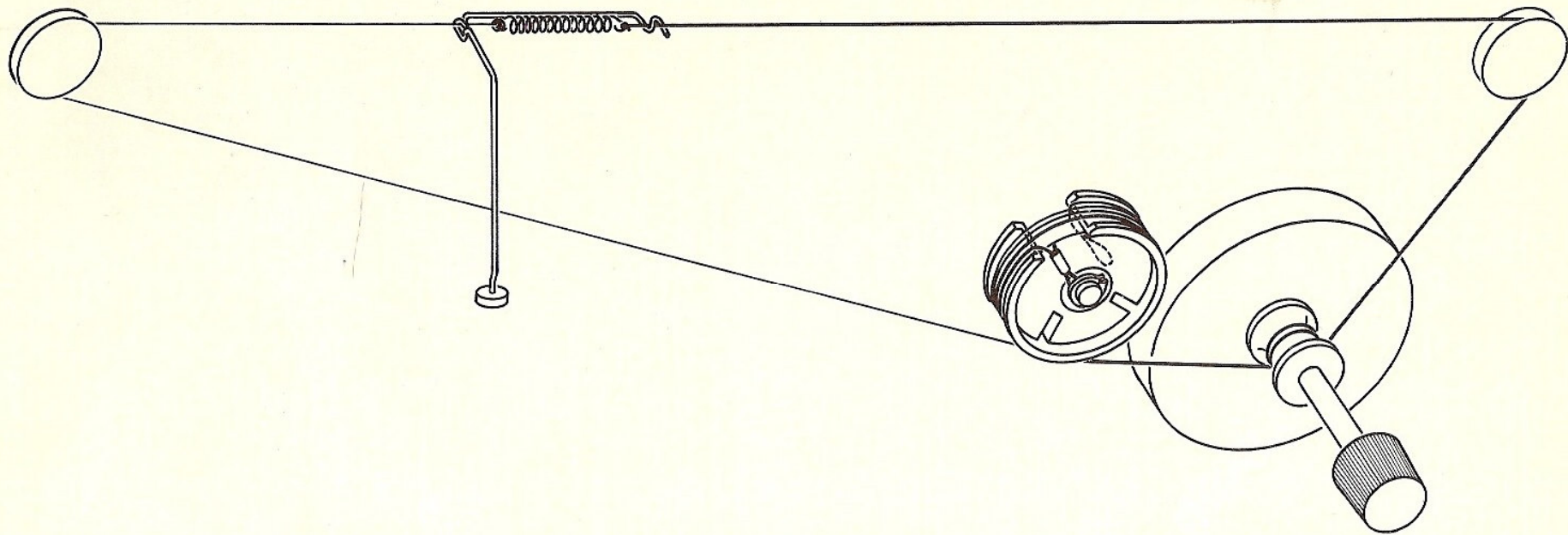
Contact board for stereo multiplex decoder, seen from the printed side. This board should be removed when plugging in the stereo multiplex decoder mod. 3.



FM-platen sett fra foliesiden.
The FM-board seen from the printed side.



Forkretsplaten sett fra foliesiden.
The RF-circuit-board seen from the printed side.



Skala snortrekk.
Dial cord drive.