

ALIGNMENT CONTROLS, TOP VIEW
TRIMMEPUNKTER SETT OVENFRA

ALIGNMENT FREQUENCIES AM
TRIMMEFREKVENSER AM

Band Bånd	Frequencies Frekvenser	Oscillator	Ext. Antenna Utv. antenne	Ferrite Ant. Ferrittant.
LB	170 kHz	L405 N	L307 Ø	L2
	260 kHz	C418	C318	C312
MB	600 kHz	L404 N	L306 Ø	L1
	1400 kHz	C415	C313	C315
FB	1,8 MHz	L403 N	L305 N	
	4 MHz	C411	C311	
KB 1	5 MHz	L402 N	L304 Ø	
	10 MHz	L407	C308	
KB 2	12 MHz	L401 N	L303 Ø	
	25 MHz	C403	C306	

NOTE: The position of the cores are indicated by N (lower maximum) and Ø (upper maximum).

MERK: Kjernenes stilling er angitt med N (nedre maksimum) og Ø (øvre maksimum).

ALIGNMENT FREQUENCIES FM
TRIMMEFREKVENSER FM

FM tuner 1

Frequency Frekvens	Dial Skala	Antenna Circuit Forkrets
90 MHz	R6	L101, L104, L105
105 MHz	C126	C102, C110, C115

FM tuner 2

Frequency Frekvens	Dial Skala	Antenna Circuit Forkrets
90 MHz	R6	L101, L103, L105
105 MHz	C121	C103, C110, C115

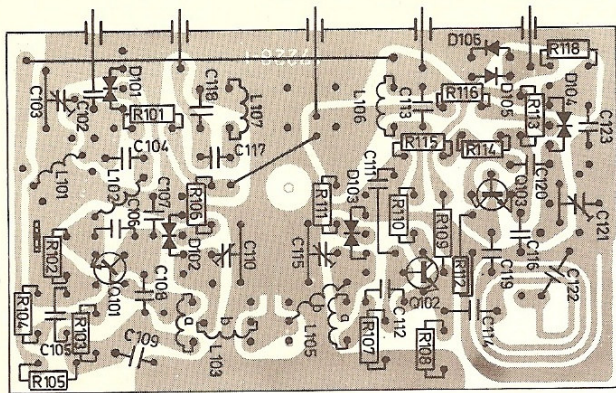
NOTE: All cores in upper maximum.

MERK: Alle kjerner i øvre maksimum.

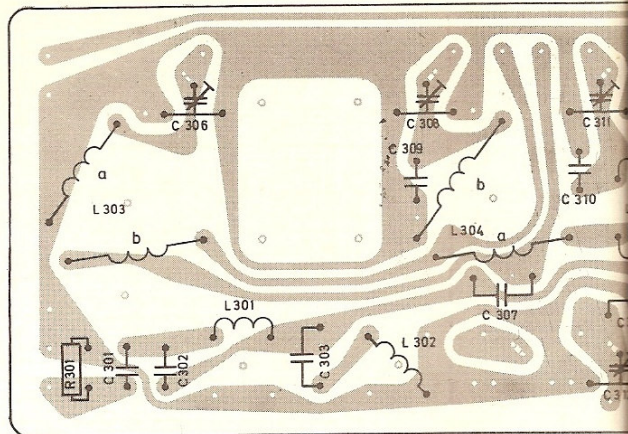
TANDBERG

HULDRA 9

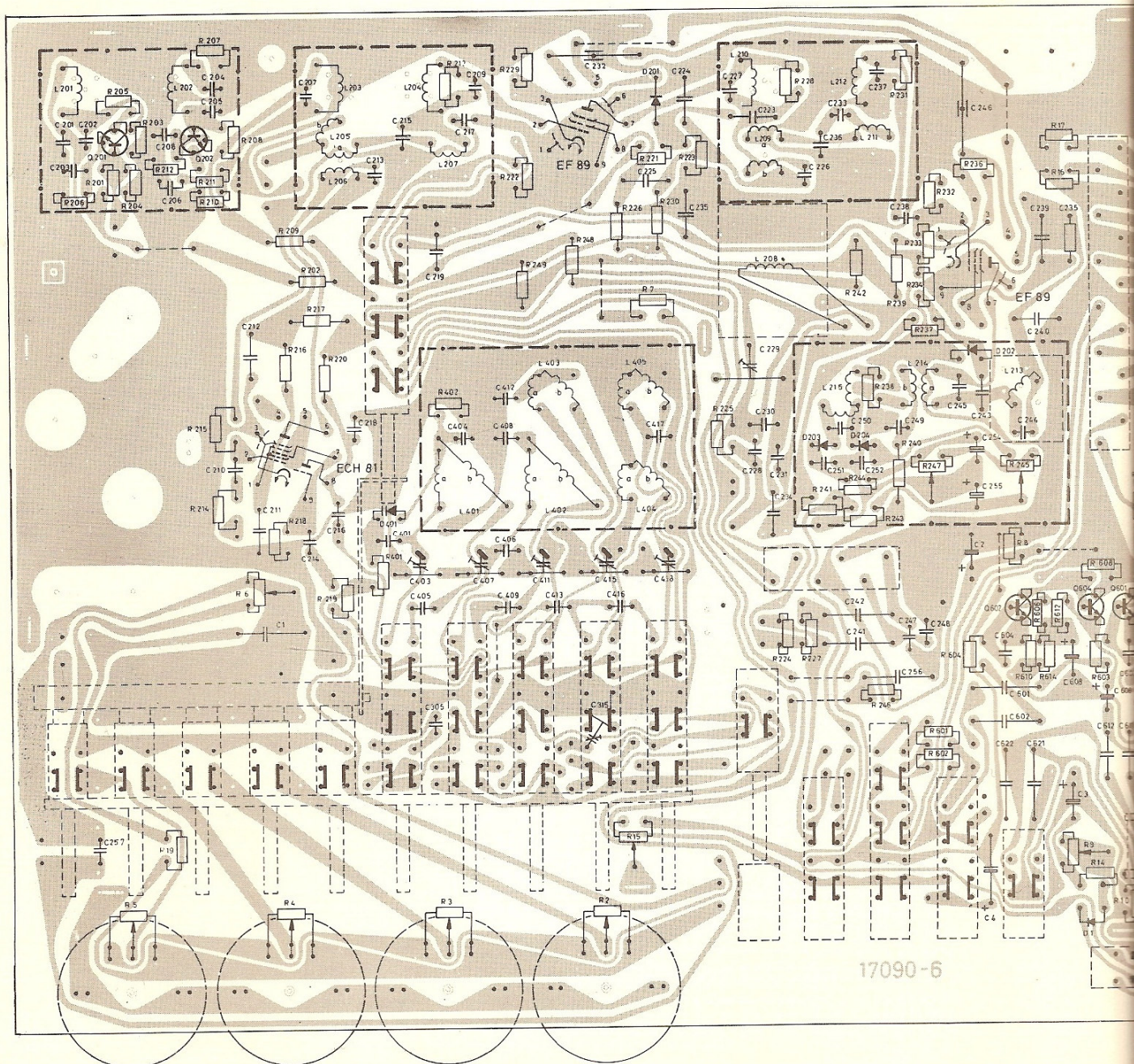
Fra Serienr. 449 000
Above Serial No. 449 000



FM TUNER

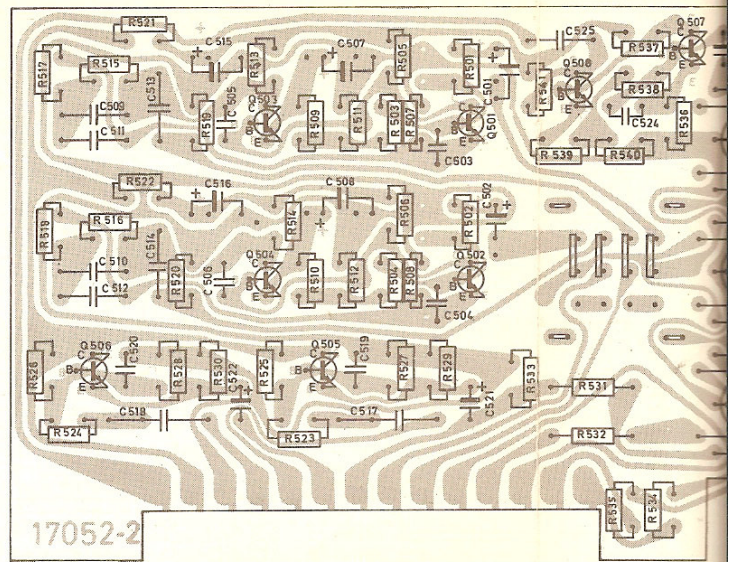
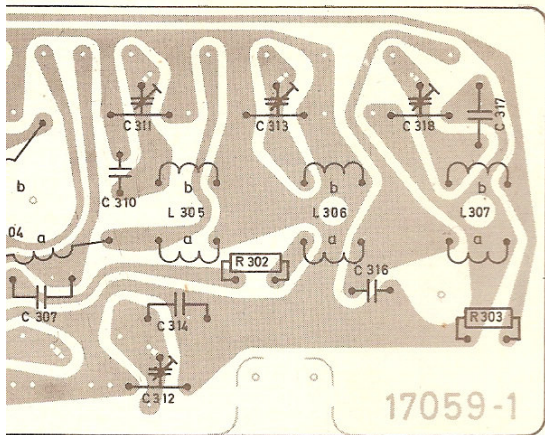


AM INPUT CIRCUIT
AM FORKRETS



MAIN COMPONENT BOARD
HOVEDPLATE

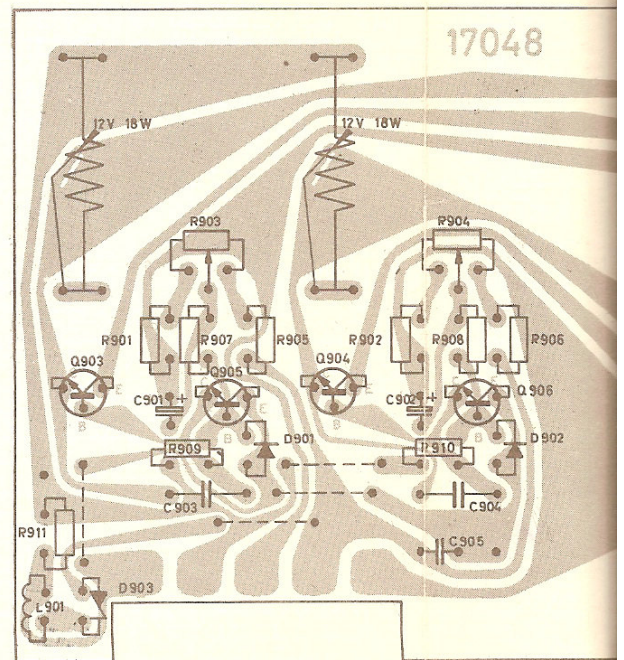
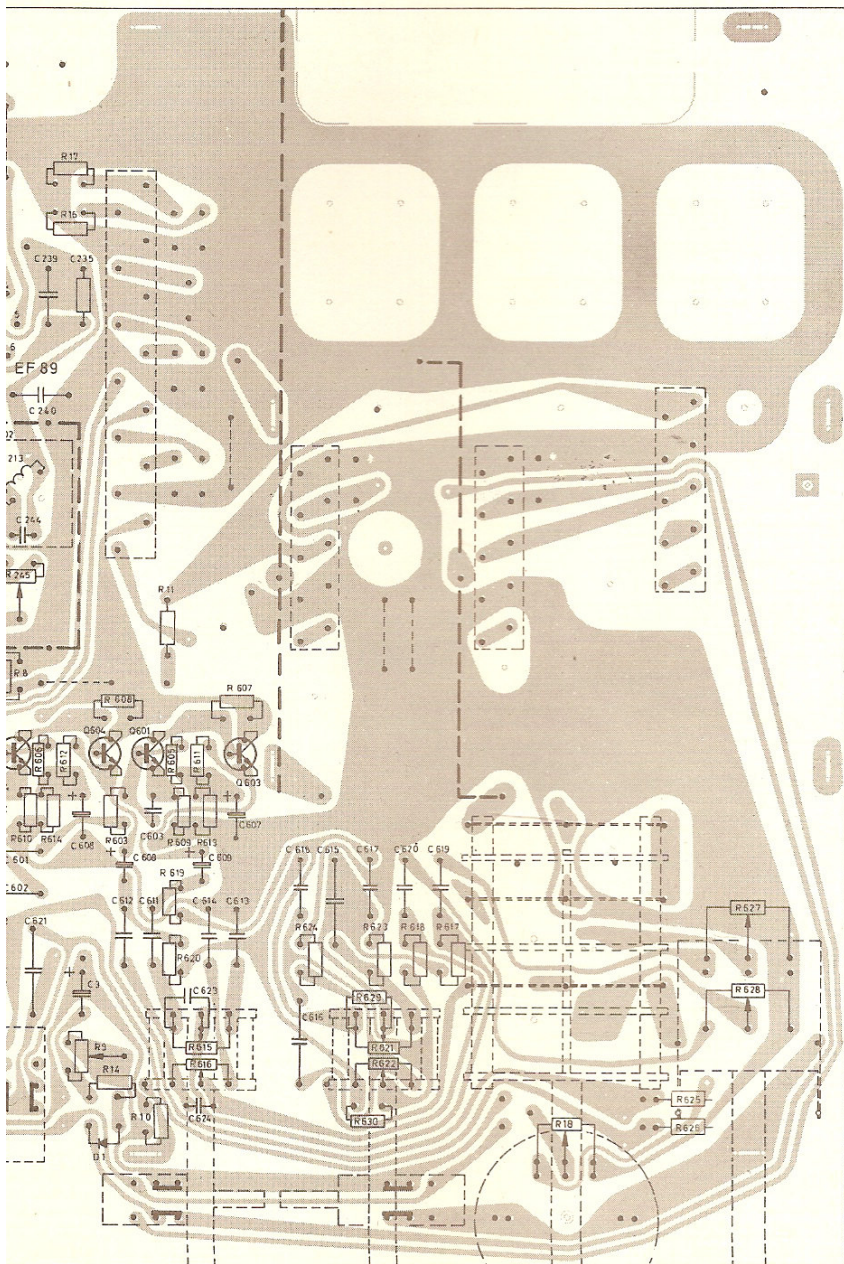
17090-6



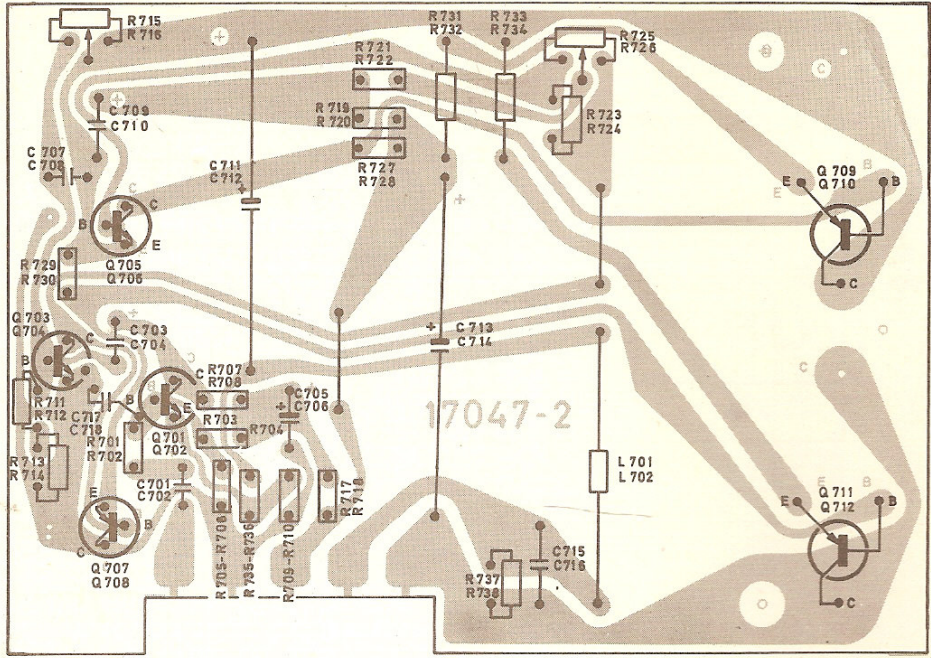
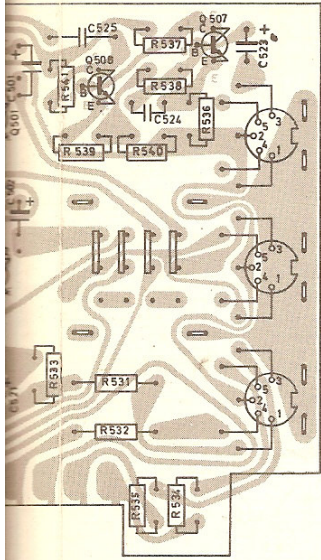
PREAMPLIFIER
FORFORSTERKER

Note: ALL COMPONENT BOARDS ARE
SHOWN FROM PRINT SIDE

NB: ALL KOMPONENTPLATER ER
SETT FRA FOLIESIDEN

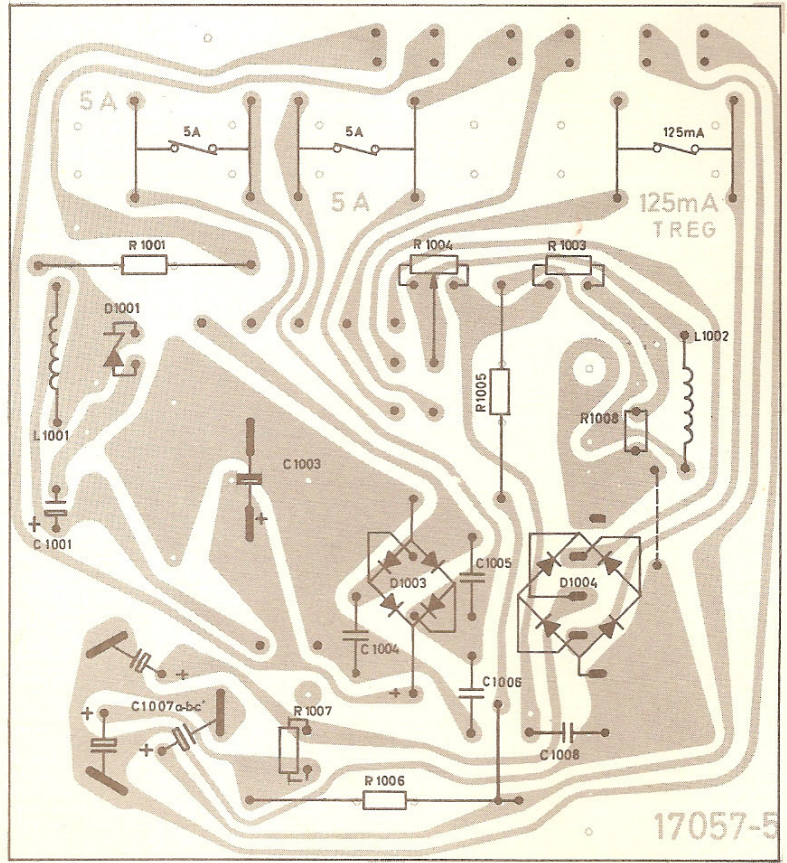
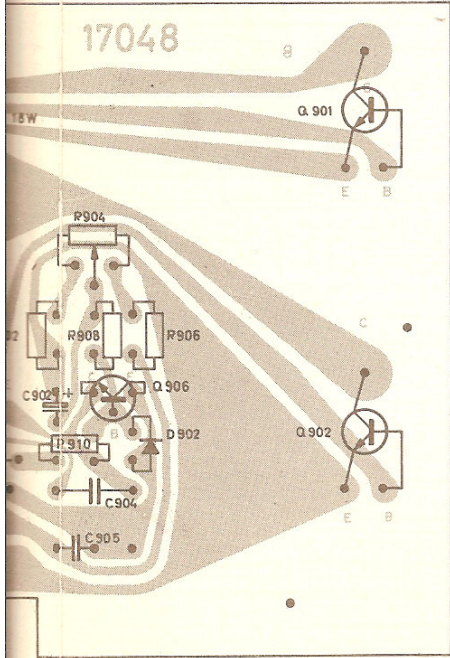


VOLTAGE REGULATOR
SPENNINGREGULATOR

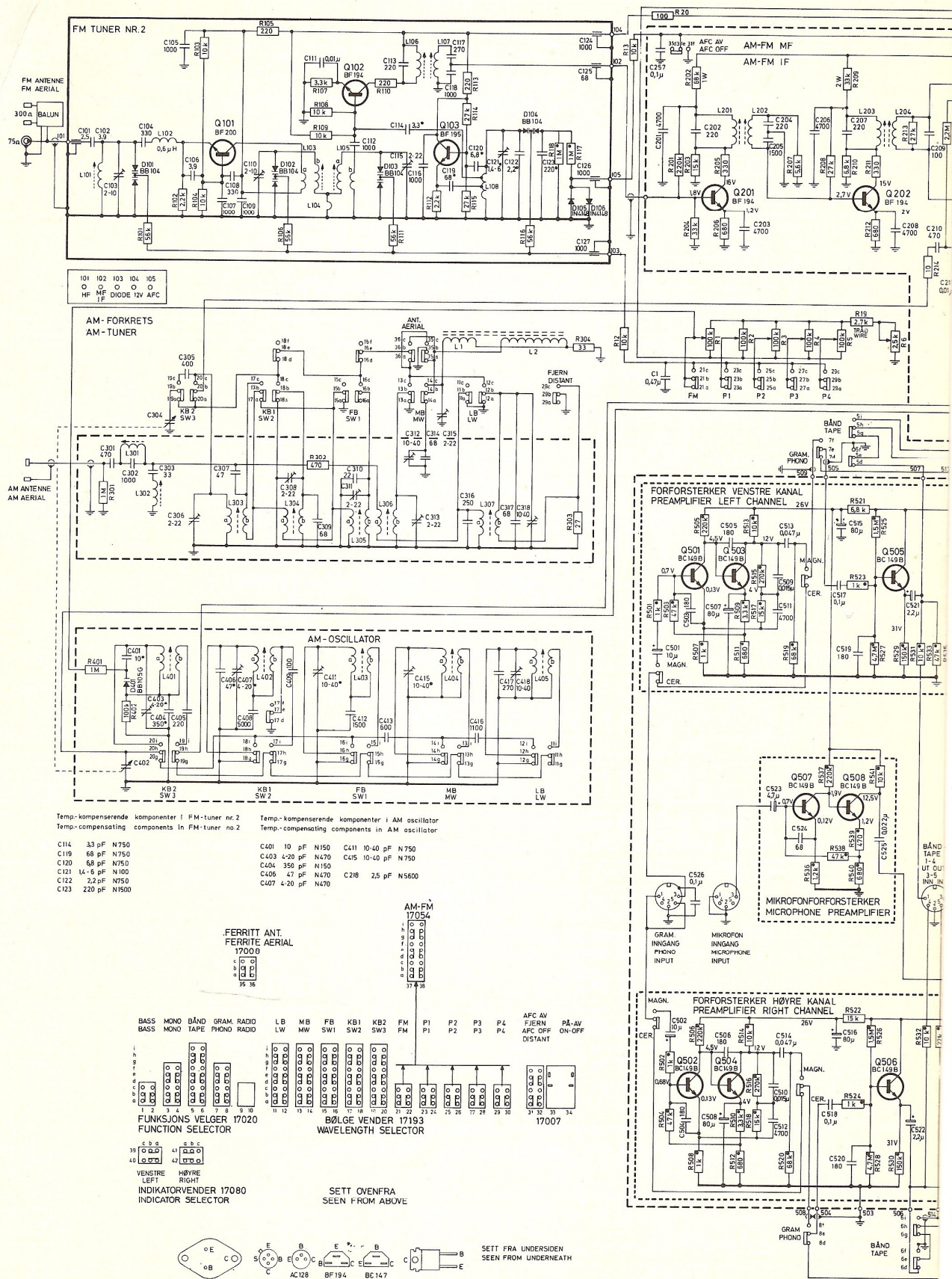


OUTPUT AMPLIFIER
UTGANGSFORSTERKER

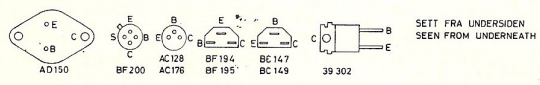
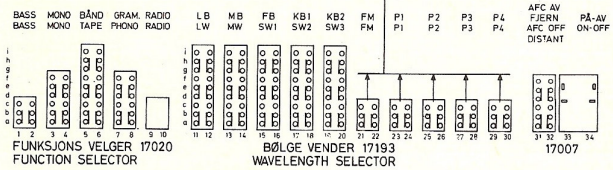
COMPONENT BOARDS ARE
PRINT SIDE
COMPONENTPLATER ER
BLESIDEN



RECTIFIER
LIKERETTER

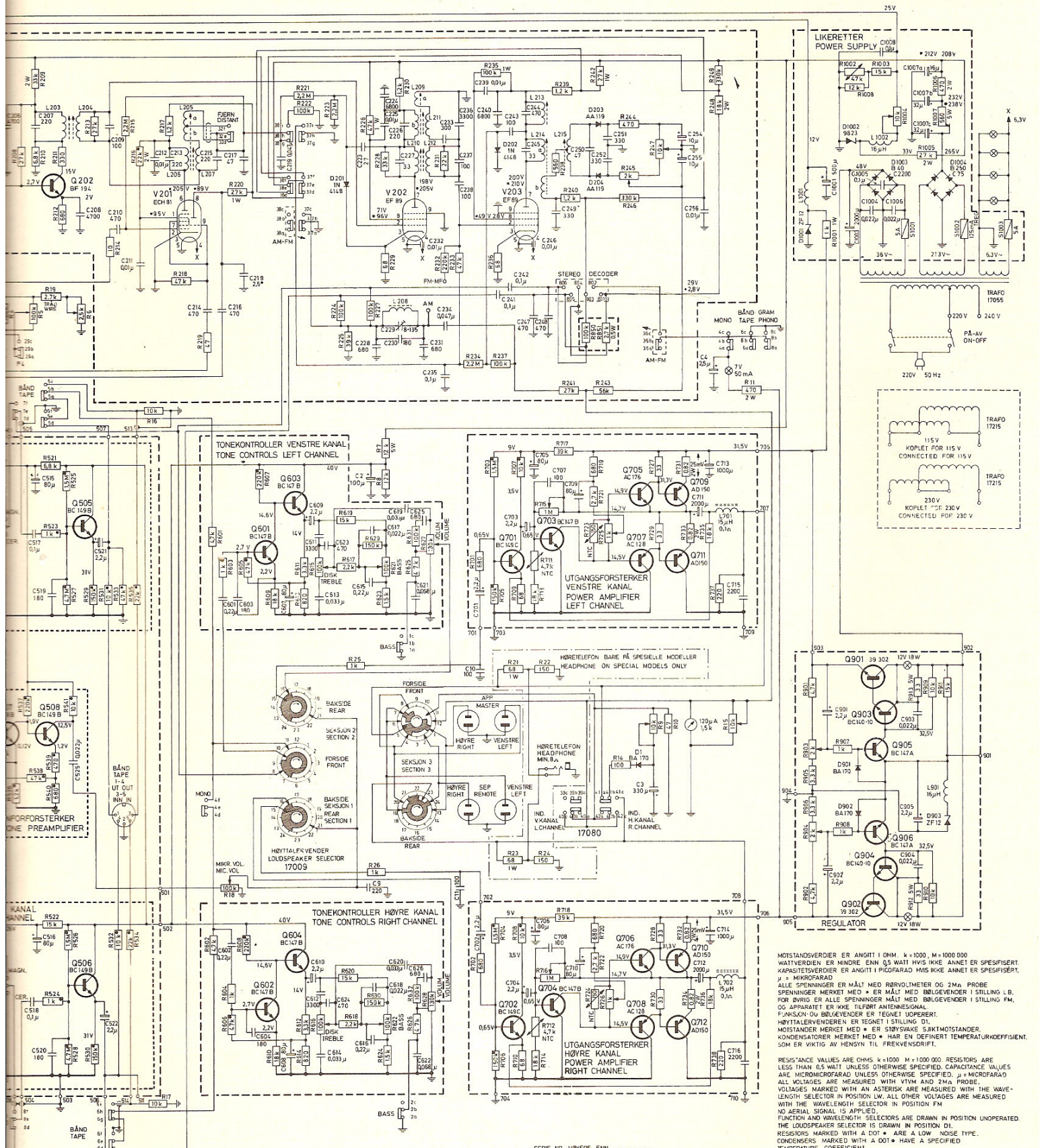


- Temp.-kompenserende komponenter i FM-tuner nr. 2
Temp.-compensating components in FM-tuner no. 2
- Temp.-kompenserende komponenter i AM oscillator
Temp.-compensating components in AM oscillator
- | | | |
|-------------------|-------------------|--------------------|
| C114 3,3 pF N750 | C401 10 pF N150 | C411 10-40 pF N750 |
| C119 68 pF N750 | C403 4-20 pF N470 | C415 10-40 pF N750 |
| C120 68 pF N750 | C404 350 pF N150 | |
| C121 14-6 pF N100 | C406 47 pF N470 | C218 2,5 pF N5600 |
| C122 2,2 pF N750 | C407 4-20 pF N470 | |
| C123 220 pF N1500 | | |



CIRCUIT DIAGRAM
SKJEMA

D1002 and R1002 are mounted at rear of front panel.
 D1002 og R1002 er monteret på frontsikke.



MOTSTANDSVERDIER ER ANGIT I OHM $\kappa = 1000$, M = 1000 000
 WATTVERDIEN ER MINORE ENN 0,5 WATT HVIS IKKE ANNET ER SPESIFISERT.
 KAPASITETSVERDIER ER ANGIT I PICOFARAD HVIS IKKE ANNET ER SPESIFISERT.
 μ = MIKROFARAD
 ALLE SPENNINGER ER MÅLT MED RØRVLØMETER OG 2 MA PROBE
 SPENNINGER MERKET MED * ER MÅLT MED BØLGEVENDER I STILLING L.B.
 FOR BUNN ER ALLE SPENNINGER MÅLT MED BØLGEVENDER I STILLING FM.
 OG APPARATET ER IKKE TILFØRT ANTENNESIGNAL.
 FUNKSIÓN OG BØLGEVENDER ER TEINET UOPERERT.
 HØRTELEFONVERDIEREN ER TEINET I STILLING D1.
 MOTSTANDER MERKET MED * ER SIVSVAKE SIKT MOTSTANDER.
 KONDENSATORER MERKET MED * HAR EN DEFINERT TEMPERATURKOEFFISIENT.
 SOM ER VIKTIG AV HENSYN TIL FREKVENSDRIF.
 RESISTANCE VALUES ARE OHMS $\kappa = 1000$ M = 1000 000
 RESISTORS ARE LESS THAN 0.5 WATT UNLESS OTHERWISE SPECIFIED. CAPACITANCE VALUES
 ARE MICROFARAD UNLESS OTHERWISE SPECIFIED. μ = MICROFARAD
 ALL VOLTAGES ARE MEASURED WITH V1VM AND 2 MA PROBE.
 VOLTAGES MARKED WITH AN ASTERISK ARE MEASURED WITH THE WAVE-
 LENGTH SELECTOR IN POSITION LW. ALL OTHER VOLTAGES ARE MEASURED
 WITH THE WAVELENGTH SELECTOR IN POSITION FM.
 NO AERIAL SIGNAL IS APPLIED.
 FUNCTION AND WAVELENGTH SELECTORS ARE DRAWN IN POSITION UNOPERATED.
 THE LOUSPEAKER SELECTOR IS DRAWN IN POSITION D1.
 RESISTORS MARKED WITH A DOT * ARE A LOW NOISE TYPE.
 CONDENSERS MARKED WITH A DOT * HAVE A SPECIFIED
 TEMPERATURE COEFFICIENT

SERIE NR HØYRE ENN
 SERIES HIGHER THAN CA.44.90 00

Rettt til endringer forbeholdes.
 Circuits may be subject to changes
 without further notice